



Dell 22 Monitor E2216HV



Get essential features for everyday office use with the Dell 22 Monitor

Essential features at a great value

Enjoy the essential monitor features you need to help drive user productivity with this affordable 21.5" monitor.

- Discover easy compatibility with legacy PCs via VGA connectivity.
- Create AIO-like simplicity in deployment by mounting a Dell Wyse thin client or Dell Optiplex Micro PC directly to available rear VESA mount area.
- Suit your viewing preference with this monitor's tilt feature.

Reliable

Comes with Dell's high reliability promise.

- Gain peace of mind with Dell's Limited Hardware Warranty¹ and Advanced Exchange Service².
- Plan fleet transitions easily with Dell's stable product cycles and worldwide product availability.
- Count on Dell's stringent quality standards that help ensure reliability to help minimize workforce downtime.

Eco-conscious design

Rest assured that the Dell 22 Monitor meets the latest environmental and energy efficiency standards.

- Help reduce your organization's carbon footprint and environment impact with the environmentally compliant Dell 22 Monitor.
- Conserve power with Power Nap, a feature found in Dell Display Manager.
- BFR/PVC-free monitor (excluding external cables) with arsenic-free glass and mercury-free LED panel.
- ENERGY STAR[®] and EPEAT[®] Silver⁴ compliant.

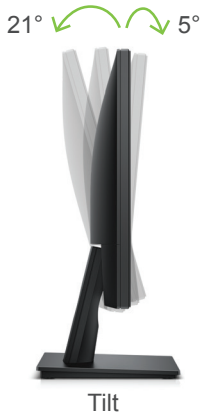


Thank you
for making
Dell Monitors

#1
worldwide*

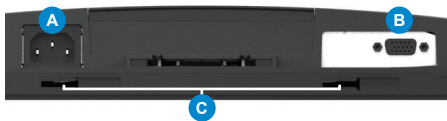
For more information visit
www.dell.com/monitors

Easily tilt the panel to your preferred viewing position to work the way you like.



Connectivity

Image enlarged and cropped to show detail



- A AC power connector
- B VGA
- C Sound bar mounting slots

What's in the box?

Components

- Monitor panel
- Stand (riser and base)
- VESA trim cover

Cables

- VGA cable
- Power cable

Documentation

- Quick Setup Guide
- Drivers and digital media
- Safety and regulatory information

Dell recommends that customers dispose used computer hardware, including monitors, in an environmentally sound manner. Potential methods include reuse of parts or whole products and recycling of product, components and/or materials. For more information, please visit http://dell.com/recycling_programs and www.dell.com/environment



Dell 22 Monitor | E2216HV

Display

Model number	E2216HV
Viewable image size (diagonal)	54.61 cm (21.5 inches)
Active display area	
Horizontal	476.06 mm (18.74 inches)
Vertical	267.79 mm (10.54 inches)
Maximum resolution	Full HD 1920 x 1080 at 60 Hz
Aspect ratio	16:9
Pixel pitch	0.248 mm x 0.248 mm
Brightness (typical)	200 cd/m ²
Color gamut (typical)	85% ³ (CIE1976)
Color depth	16.7 million colors
Contrast ratio (typical)	600:1
Viewing angle (typical) (vertical/horizontal)	65°/ 90°
Response time (typical)	5 ms black-to-white
Panel technology	TN (active matrix –TFT LCD), anti-glare
Backlight	LED
Dell soundbar (optional)	AC511

Connectivity

Connectors	VGA only
------------	----------

Design features

Stand	Tilt only (Typical: 5° forward or 21° backward)
VESA mounting support (wall mount kit sold separately)	100 mm x 100 mm
Security	Security lock slot (security lock not included)

Power

AC input voltage/frequency/current	100 to 240 VAC/50 or 60 Hz ± 3 Hz/1.0 A (typical)
Power consumption (typical)	18W
Power consumption (ENERGY STAR®)	18.2W
Power consumption standby/sleep mode	<0.3 W

Dimensions (with stand)

Height	396.7 mm (15.62 inches)
Width	512.2 mm (20.17 inches)
Depth	180 mm (7.09 inches)

Weight

Weight (panel only – no stand)	2.83 kg (6.24 lb)
Weight (with stand)	3.63 kg (8.0 lb)
Shipping weight	4.30 kg (9.48 lb)

Standard service plan

- 3 Years Advanced Exchange Service² & 3 Years Limited Hardware Warranty¹

Environmental compliance

ENERGY STAR®, EPEAT® Silver⁴, CECP, EU RoHS

^{*}Dell monitors are #1 worldwide for 3 consecutive years! Source: IHS Global Inc. Desktop Monitor Market Tracker (2013 to 2015) ID# G16000073

^{**}Registered in US and Canada only.

¹For a copy of the Limited Hardware Warranty, write Dell USA LP, Attn: Warranties, One Dell Way, Round Rock, TX 78682 or see dell.com/warranty.

²Advanced Exchange Service: Replacement part/unit dispatched, if needed, following completion of phone/online diagnosis. Fee charged for failure to return defective unit. Availability varies. Other conditions apply.

³Color gamut (typical) is based on CIE1976 (85%) and CIE1931 (72%) test standards.

⁴EPEAT Silver registered in the U.S. EPEAT registration varies by country. See www.epeat.net for registration status by country.

